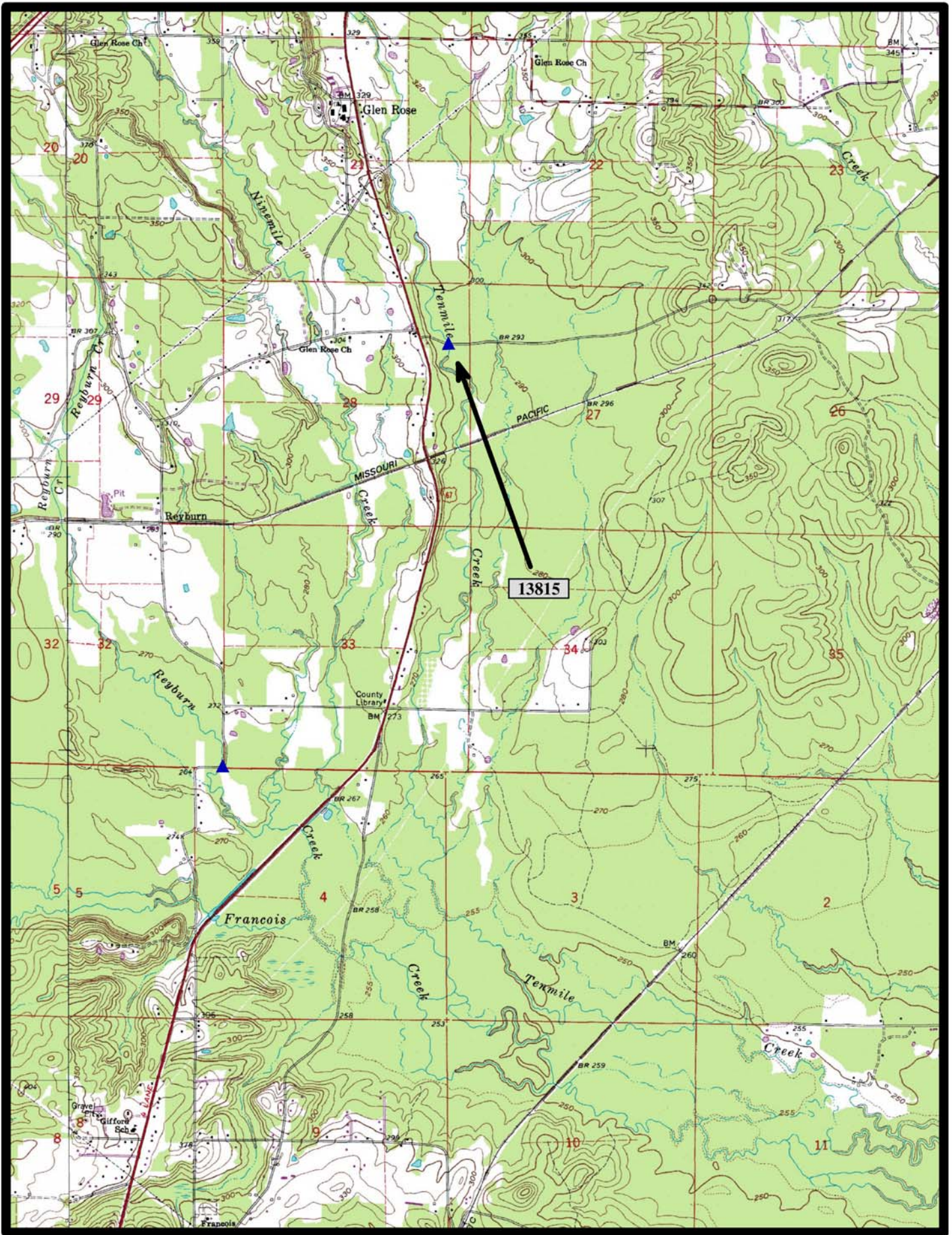




HISTORIC BRIDGE #13815
RED WAGON ROAD (Co. Rd. 72)
HOT SPRING COUNTY
CONCRETE ARCH, DECK—CLOSED SPANDREL
CROSSES - TENMILE CREEK
DATE OF CONSTRUCTION – 1935
BUILDER - UNKNOWN
HISTORIC BRIDGE INVENTORY DATE - 2005
SHPO NUMBER - HS0159
HAER NUMBER -
DATE LISTED ON NATIONAL REGISTER -
LAT./LONG. 34:26:27.79, -92:43:21.40

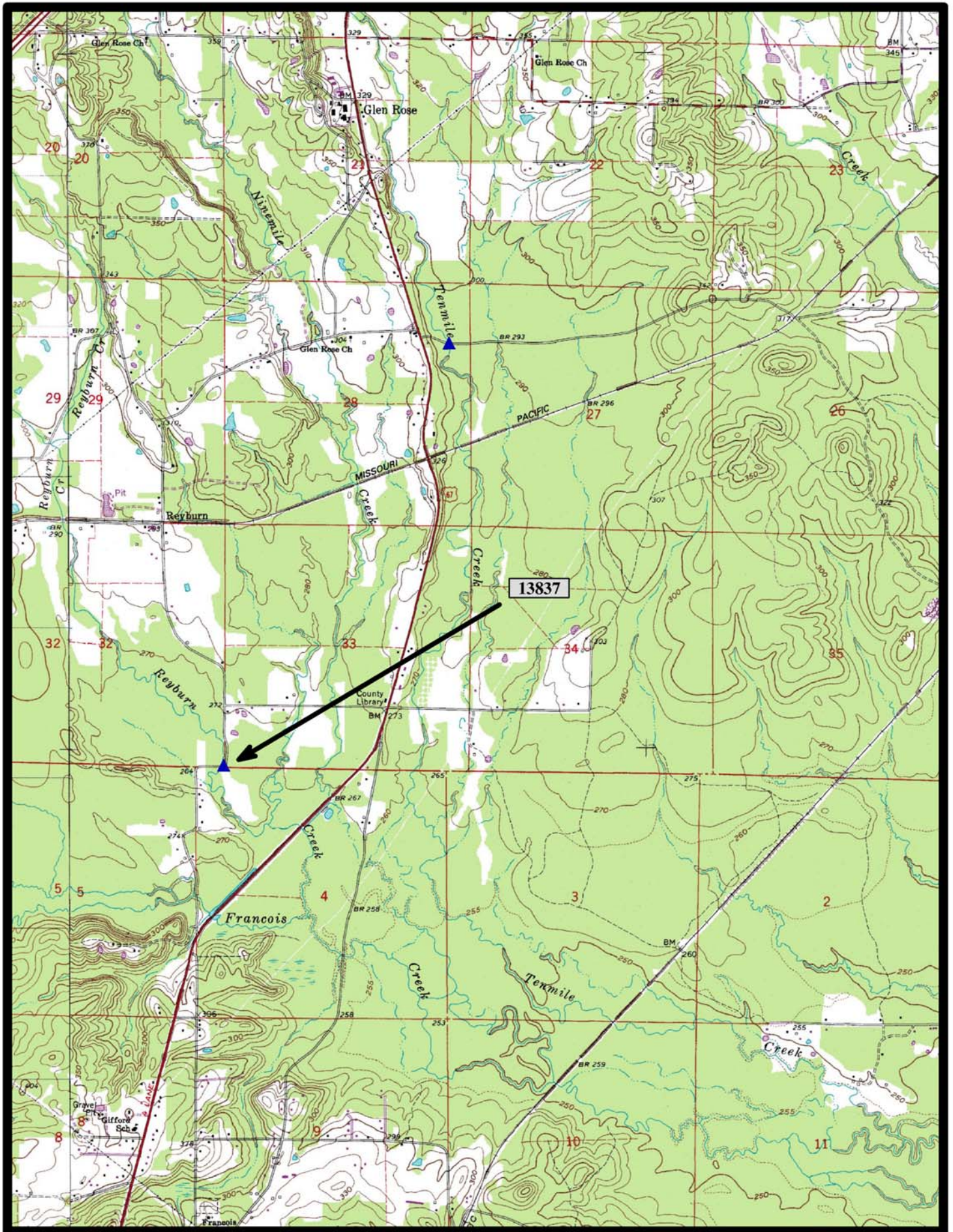


↑
North

Traskwood 7.5 min. Quad



HISTORIC BRIDGE #13837
COUNTY ROAD 180
HOT SPRING COUNTY
CONCRETE ARCH, DECK—CLOSED SPANDREL
CROSSES - RAYBURN CREEK
DATE OF CONSTRUCTION – 1930
BUILDER - UNKNOWN
HISTORIC BRIDGE INVENTORY DATE - 2005
SHPO NUMBER - HS0160
HAER NUMBER -
DATE LISTED ON NATIONAL REGISTER -
LAT./LONG. 34:24:56.51, -92:44:21.05

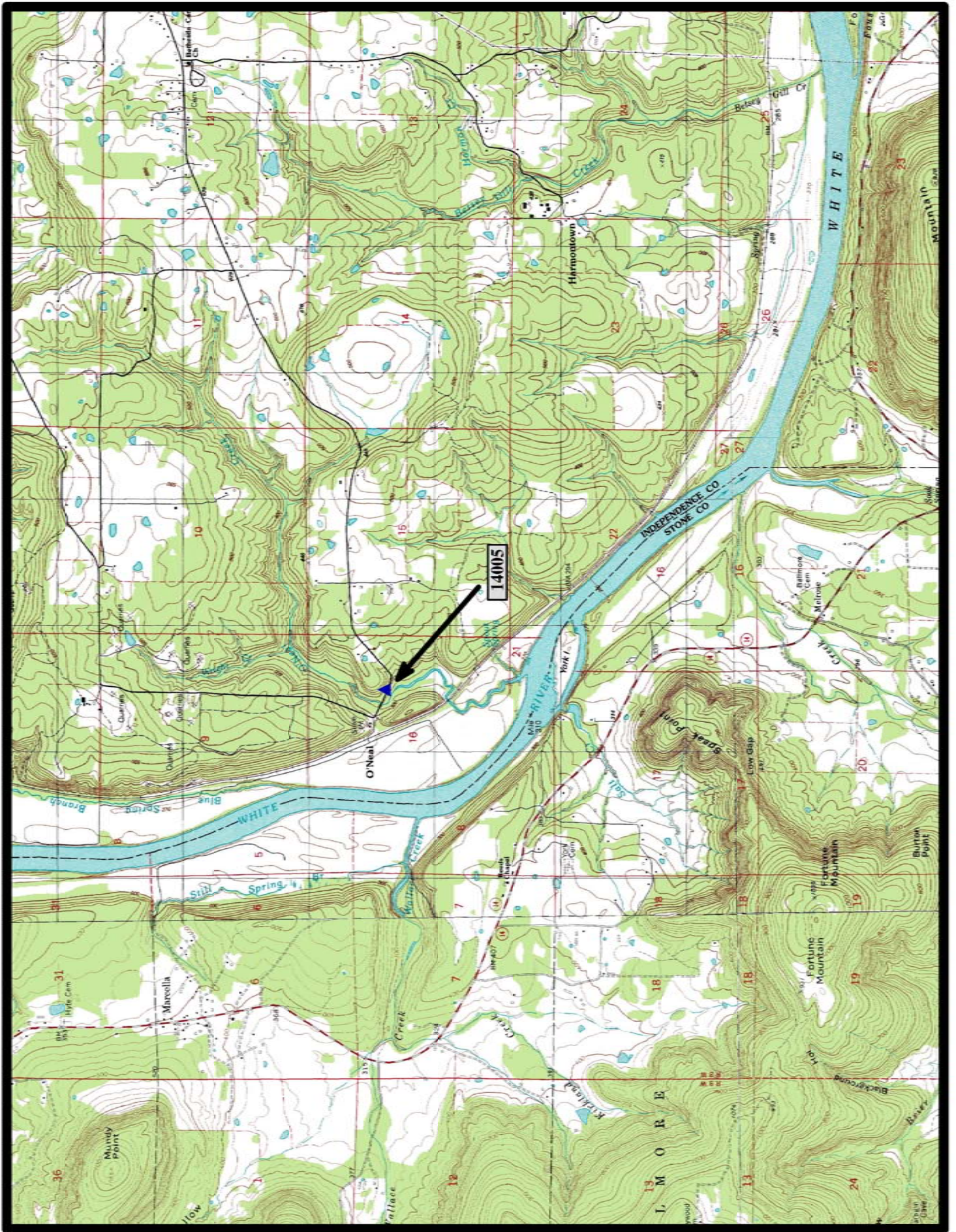


↑
North

Traskwood 7.5 min. Quad



HISTORIC BRIDGE #14005
COUNTY ROAD 37
INDEPENDENCE COUNTY
CONCRETE ARCH, DECK—CLOSED SPANDREL
CROSSES - O'NEAL CREEK
DATE OF CONSTRUCTION – 1933
BUILDER - UNKNOWN
HISTORIC BRIDGE INVENTORY DATE - 2005
SHPO NUMBER - IN0275
HAER NUMBER -
DATE LISTED ON NATIONAL REGISTER -
LAT./LONG. 35:46:31.37, -91:51:22.86

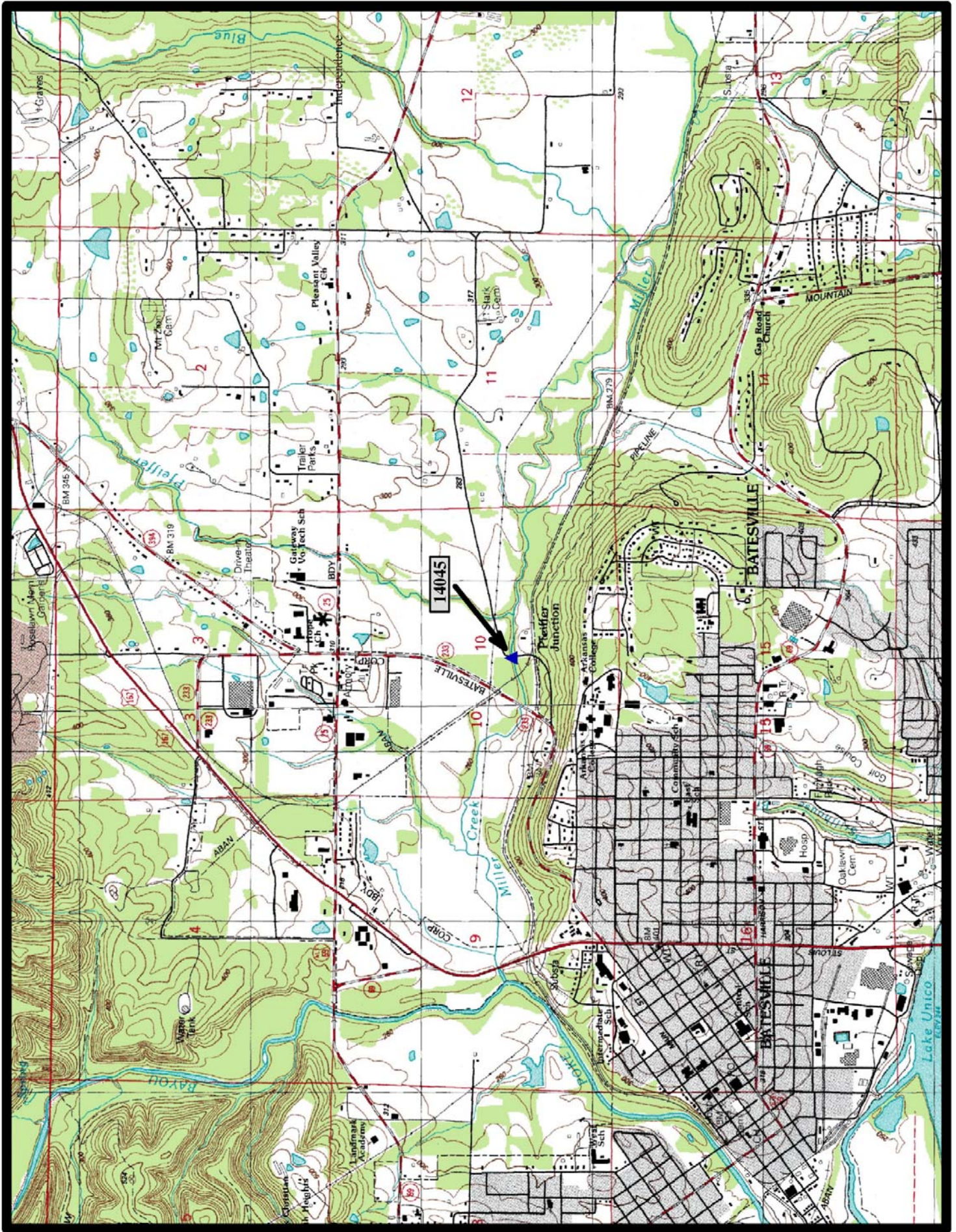


North

Bethesda, Marcella 7.5 min. Quads



HISTORIC BRIDGE #14045
COUNTY ROAD 86
INDEPENDENCE COUNTY
CONCRETE ARCH, DECK—CLOSED SPANDREL
CROSSES - MILLER CREEK
DATE OF CONSTRUCTION - 1914
BUILDER - HARTFORD & FUGATT, BATESVILLE, AR
HISTORIC BRIDGE INVENTORY DATE - 2005
SHPO NUMBER - IN0236
HAER NUMBER - AR-105
DATE LISTED ON NATIONAL REGISTER -
LAT./LONG. 35:46:56.06, -91:37:18.81

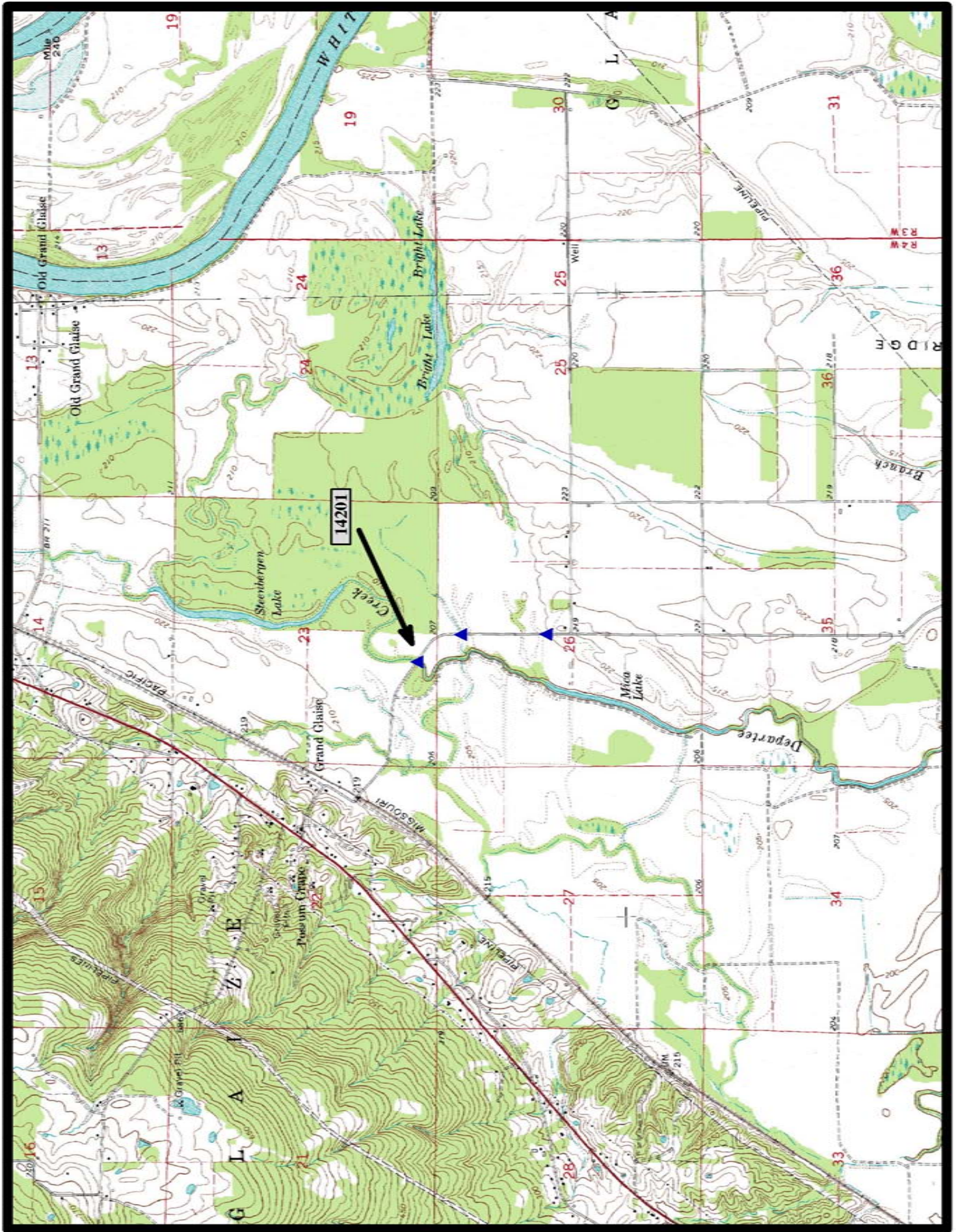


North

Sulphur Rock 7.5 min. Quad



HISTORIC BRIDGE #14201
COUNTY ROAD 315
JACKSON COUNTY
CONCRETE ARCH, DECK - CLOSED SPANDREL
CROSSES - DEPARTEE CREEK
DATE OF CONSTRUCTION - 1930
BUILDER - UNKNOWN
HISTORIC BRIDGE INVENTORY DATE - 2005
SHPO NUMBER - JA0515
HAER NUMBER -
DATE LISTED ON NATIONAL REGISTER -
LAT./LONG. 35:28:10.40, -91:23:57.75



↑
North

Bradford 7.5 min. Quad